

St. Jude Walk/Run – Ann Arbor

Saturday, September 21, 2019

8:00 am Registration, Donation drop-off, T-shirt Pick Up and Activity Areas Open

8:40am Opening Ceremony

9:00am 5k Run/Walk begins

Location: Fuller Park – 1519 Fuller Park Rd, Ann Arbor, MI 48105

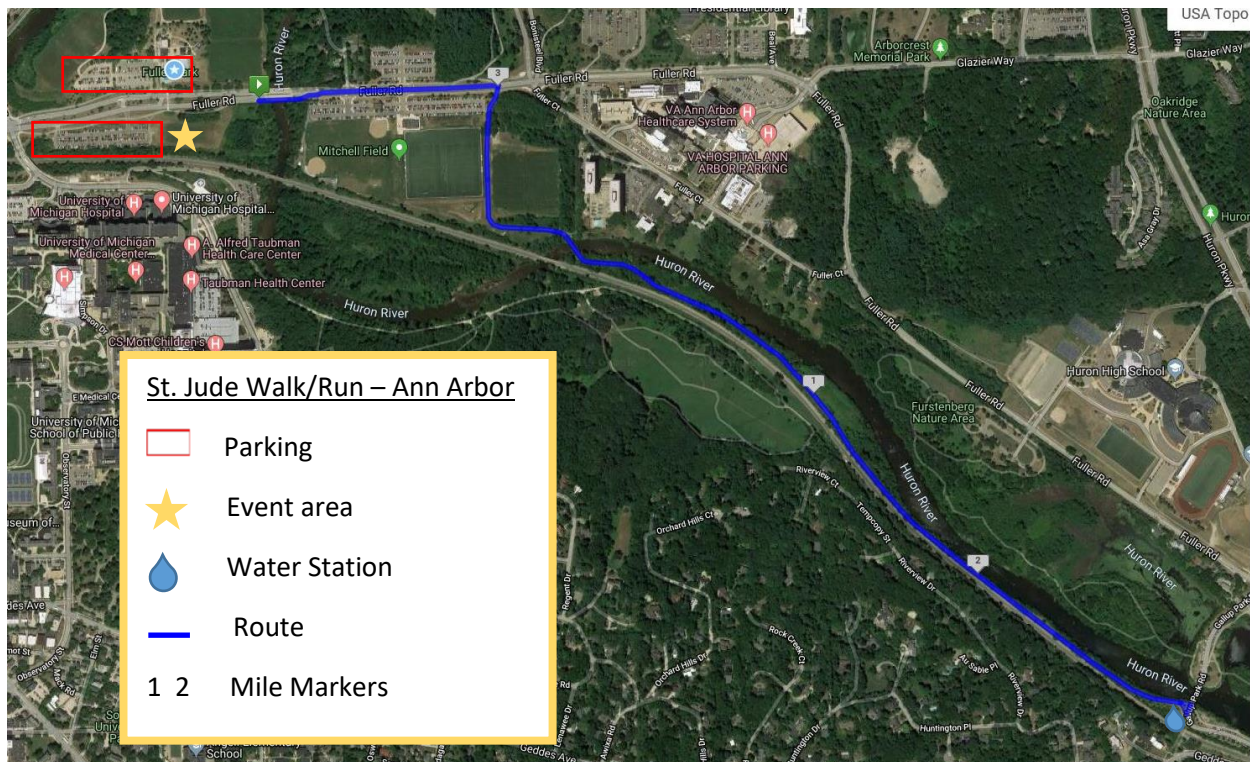
Parking: Fuller Park Parking – Lot M-78 **1491 Fuller Rd.** (Use this address to enter into your GPS.)

OR University Hospital Parking – Lot M-71 **1407 Fuller Rd.**

****You will need to cross Fuller Rd if parking at the Fuller Park Parking Lot to get to the event space across the street. Volunteers will be there to assist. The University Hospital Parking lot is on the same side of the road as the event, next to the event space.****

Event Tips and Tricks:

- Arrive early (starting at 8:00am) to allow time to park, and walk to the event area, to check in, and to enjoy the **Kid and Family Zone** featuring lots of family fun activities.
- ALL participants must stop in the registration tent to check in!
- Don't forget to grab some water and snacks in the **Hospitality Area** after the race.
- Everyone that raises \$100 or more will receive a **special t-shirt** on event day
- You will receive an email post-event to redeem your fundraising incentive



Route:

MUST STAY ON SIDEWALK the whole route. This is an **OUT AND BACK** course. Please stay to your **RIGHT**.

Start- Fuller Park. East on Fuller Rd. Turn right to follow Gallup Park Pathway (just past Mitchell Field. South on Gallup Park Pathway. Turnaround loop at the water station. North on Gallup Park Pathway. East on Fuller Rd. – back to start/finish line at the event area.

**Route is supported by volunteers. Please stay on the sidewalks and keep to the right for oncoming runners/walkers.*